
Is Your AI a Little Racist? (And Other Bias Problems)

Hey, let's talk about AI getting a little out of hand

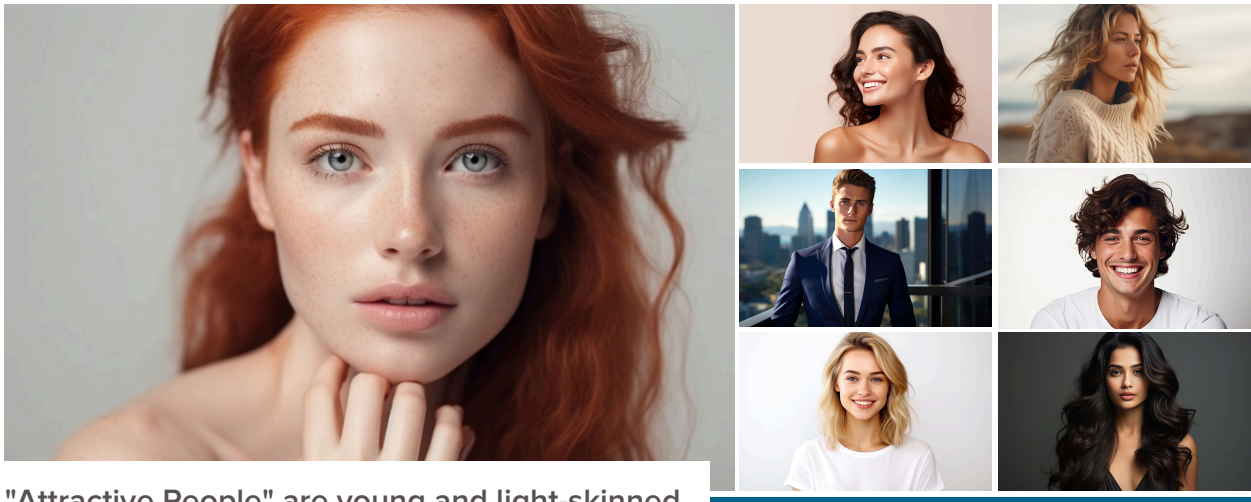
Posted on [Mobilize.Net](https://mobilize.net) on May 20, 2024



You know how AI is everywhere now? It's cool, but also sometimes... not. AI keeps getting tripped up by bias. It makes some weird, unfair assumptions, and that's a serious problem.

When AI messes up

Picture this: you try out one of those image generators, and it keeps making beautiful people look young and light-skinned. Or you search "person cleaning" and boom — mostly women in the results. Yikes! Those are biases built right in, and they can really limit people's chances in the real world.



"Attractive People" are young and light-skinned



"Person Cleaning"

Where does it come from? Well, often the data that AI learns from is messed up. And sadly, the tech world lacks diversity, so important viewpoints get missed when AI systems are being built.

What can we do? (Hint: It's like being in the hospital)

Think about how hospitals do things: they ask permission, explain stuff simply... we should do the same with AI! Explain how it makes decisions, be clear about its limits. AI shouldn't be this mysterious thing no one understands.

Teamwork is the key

We **NEED** more diverse teams making AI. Imagine all that creativity and problem-solving power when people from different backgrounds get together! But it's not just about hiring diverse folks, it's about making everyone feel heard and respected.

So, what's the big picture?

We need some serious champions for fair tech! That means pushing companies to be more inclusive, and the AI folks need to be super upfront about what they're doing. Let's have honest conversations about how to make this stuff work for everyone.

Here are some additional strategies and approaches to tackle bias in AI:

Data-Centric Fixes

- **Actively Curate and Balance Datasets:** Scour your training data for imbalances. Look for under- and over-representation of certain groups. Proactively add in data points to create a more balanced and inclusive set.

- **Synthetic Data Generation:** When sensitive real-world data is limited, consider creating synthetic data that better represents minority groups or underrepresented scenarios.
- **Data Augmentation:** "Flip" or slightly modify images and text examples to increase variety and reduce overfitting to particular patterns. This prevents AI from becoming overly reliant on specific features.

Algorithmic Solutions

- **Adversarial Training:** Introduce intentional bias into a copy of your dataset. Train two AI models against each other – one to find patterns, the other to spot the bias. This helps uncover blind spots.
- **Bias Mitigation Techniques:** Explore pre-processing, in-processing, and post-processing tools designed to reduce bias. Some examples include re-weighting data, adjusting classification thresholds, or adding regularization terms to the model.
- **Fairness Metrics:** Clearly define what "fairness" means in the context of your AI. Develop specific metrics (like equalized odds or demographic parity) to track and evaluate your model's bias during development and post-deployment.

The Human Factor

- **Diverse Auditing Teams:** Establish teams with diverse backgrounds to audit AI systems for bias. Include subject matter experts, those from potentially impacted populations, and ethicists.
- **Explainable AI (XAI):** Develop techniques to make AI's decision-making process interpretable. This helps humans spot where bias might be creeping in, even in complex models.
- **Feedback Loops:** Create channels for users to easily report suspected bias. Incorporate this real-world feedback to continually adjust and improve your models.

Beyond the Technical

- **Bias Education:** Raise awareness about bias amongst developers, managers, and stakeholders. Invest in training that covers the sources of bias and the social impact of biased AI.
- **Industry Standards and Regulations:** Work towards establishing industry-wide guidelines for ethical AI development and transparent auditing processes.
- **Public Engagement:** Foster an open dialogue about AI and bias with the broader public. Include those potentially impacted by AI, encouraging them to participate in the development and evaluation of these systems.

Important Note: There's no single magic bullet! Fixing bias in AI is an ongoing process involving technical improvements, diverse teams, robust standards, and continuous monitoring.

ABOUT GROWTH ACCELERATION PARTNERS:

At GAP, we consult, design, build and modernize revenue-generating software and data engineering solutions for clients. With modernization services and AI tools, we help businesses achieve a competitive advantage through technology. Learn more at [WeAreGAP.com](https://www.WeAreGAP.com).

To find out more, please visit [WeAreGAP.com](https://www.WeAreGAP.com) 

